

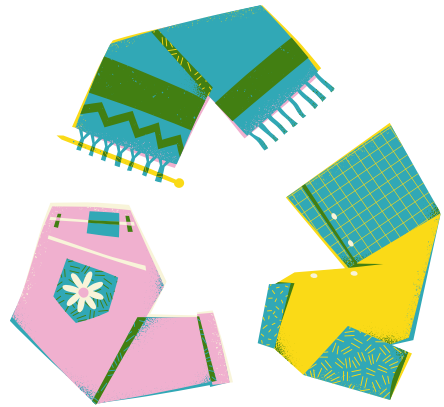
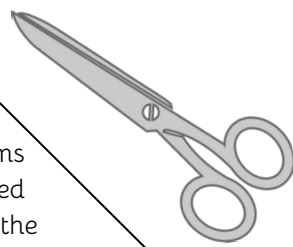


What percentage does the fashion industry contribute to global microplastic pollution?

A. 20%
B. 35%
C. 50%

How many billion clothing items are consumed annually in the fashion industry?

A. Approximately 50 billion
B. Approximately 80 billion
C. Approximately 100 billion



Why is buying second-hand clothes important for the clothing industry sustainability?

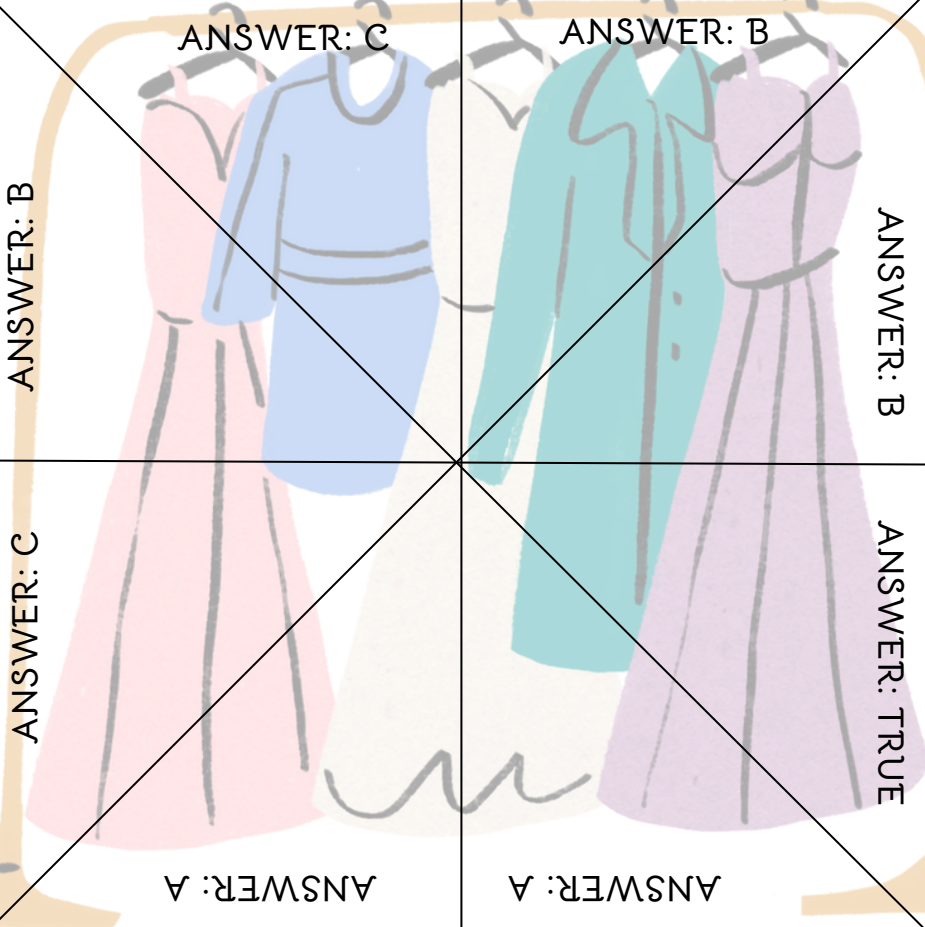
A) Saves money
B) Reduces environmental footprint, supports circular economy, does not require new resources
C) More fashionable than new clothes

ANSWER: C

ANSWER: B

ANSWER: B

ANSWER: B



How much water is approximately needed to produce a single cotton t-shirt?

A. 500 liters
B. 2,700 liters
C. 10,000 liters

What percentage of clothing products are recycled?

A. More than 50%
B. Less than 10%
C. Less than 1%

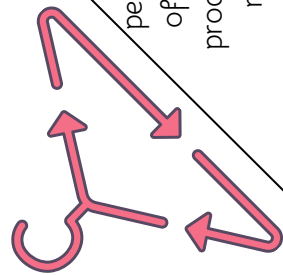
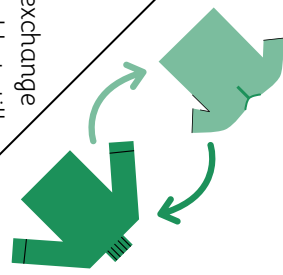
ANSWER: C

ANSWER: TRUE

ANSWER: A

ANSWER: A

True or False? Clothing SWAPS are events where participants exchange their unwanted but still usable clothing for items they will actually wear, promoting sustainable fashion and saving money.



What percentage of the world's annual carbon dioxide emissions does the fashion industry account for?

A. Synthetic most clothing items in the fashion industry?
B. Cotton
C. Wool

