

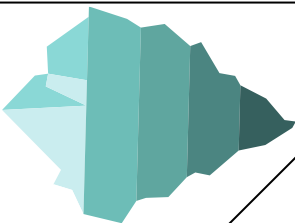
Why is the "Attitudes" layer considered hidden in the Iceberg Model?

- A. It cannot be observed
- B. It is visible above the surface
- C. It is less important



Which layer of the Iceberg Model is related to hands-on abilities and practical tasks?

- A. Knowledge
- B. Skills
- C. Attitudes



Why is the iceberg model useful for understanding competence?

- A. It only considers visible actions
- B. It involves knowledge, skills, and attitudes
- C. It ignores practical applications

ANSWER: B

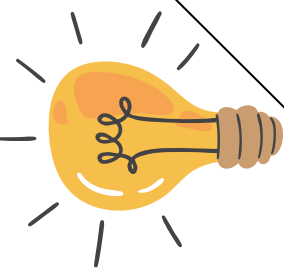
ANSWER: A

ANSWER: B

ANSWER: FALSE



True or False? "Skills" in the Iceberg Model refer to theoretical knowledge rather than practical application.



What does the Knowledge layer represent in the Iceberg model?

- A. Beliefs and values
- B. Practical application of information
- C. Factual information

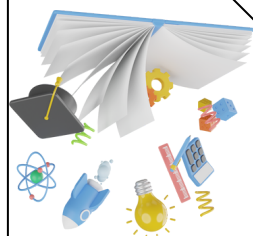
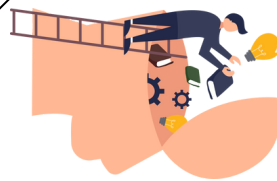
ANSWER: C

ANSWER: FALSE

ANSWER: TRUE

ANSWER: TRUE

True or False? The "Skills" layer in the Iceberg Model involves applying knowledge in real situations.



True or False? According to the iceberg model knowledge is only about theoretical understanding.

True or False? The Iceberg Model suggests that attitudes influence behavior and motivations.

